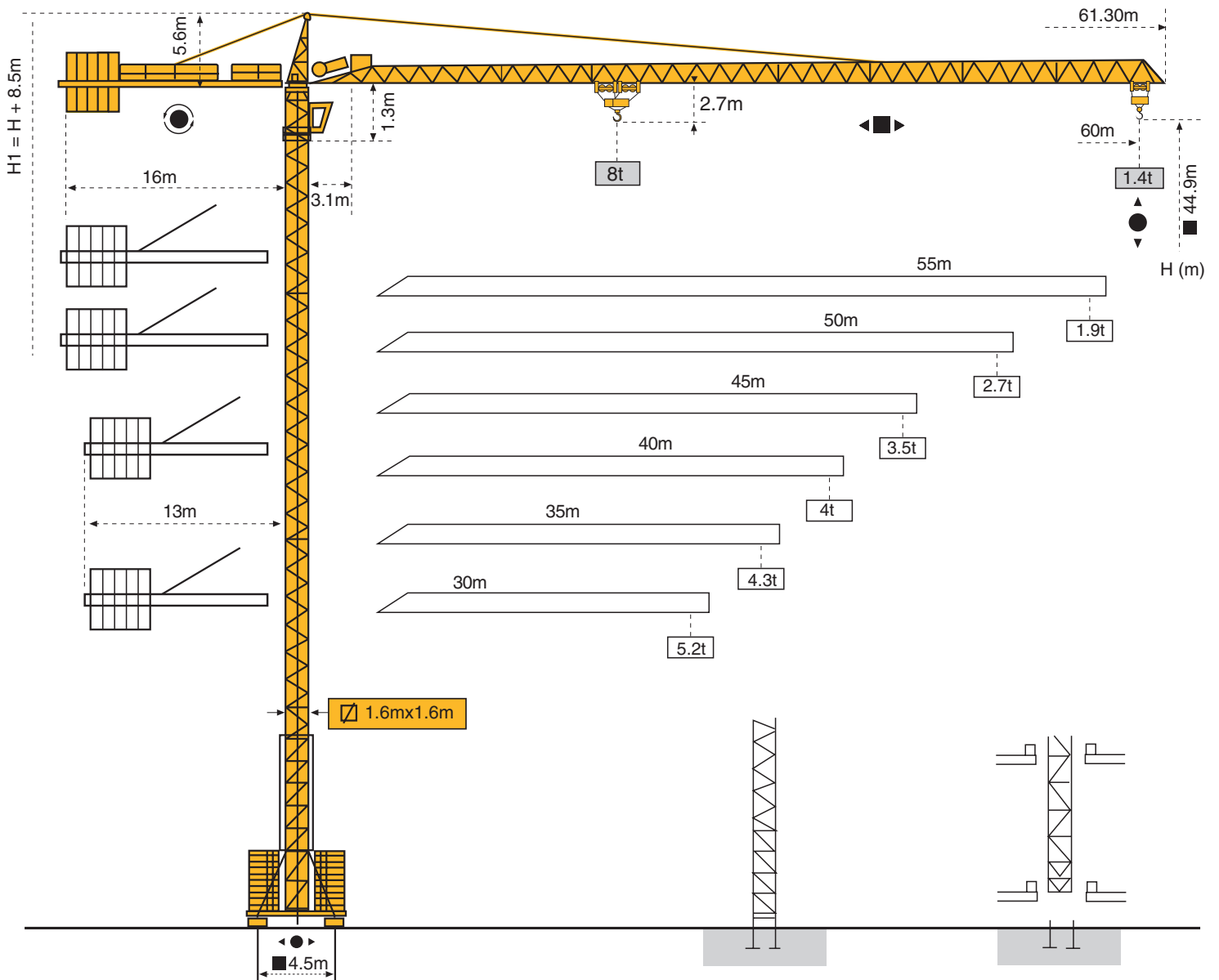


MC 175B



Masts / Reactions

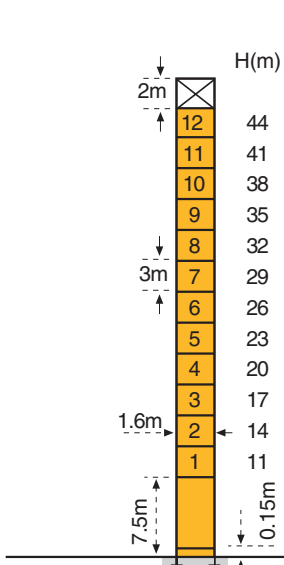
Masts



1.6m

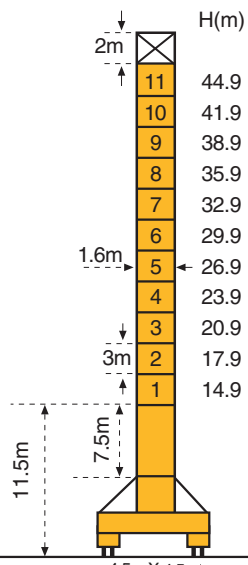
Jib

30m \Rightarrow 60m



P 16 A

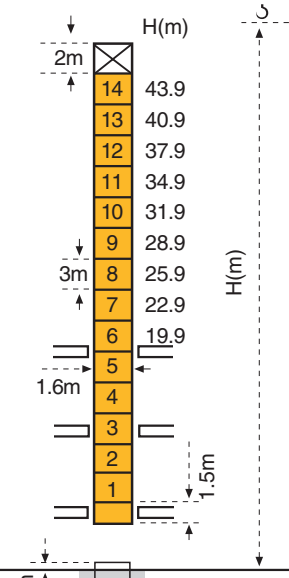
F2	•95t	■138t
F3	•65t	■111t
	📦	37t



SB 16 A

F1	•68t	■88t
	📦	44t

F = Reactions

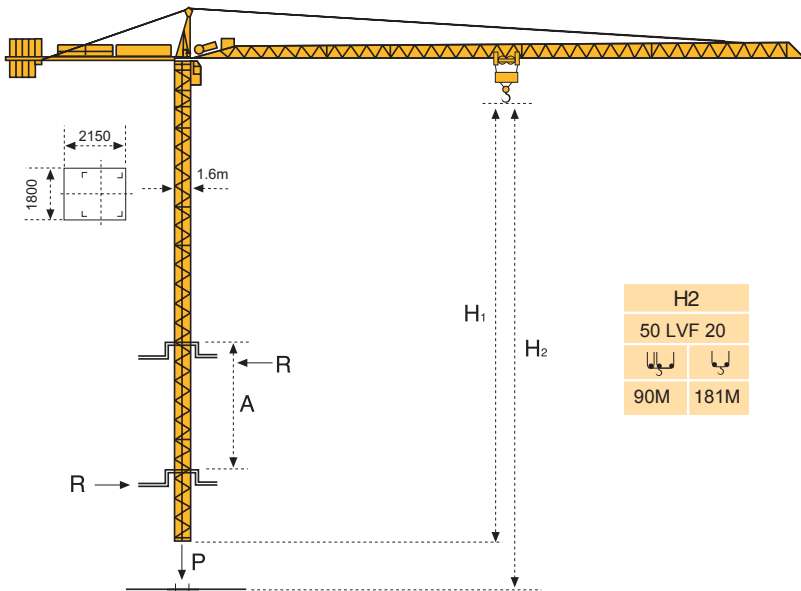


BA 45 A

Please consult us

- In service
- Out of service
- 📦 Without load and ballast with longest jib and maximum height

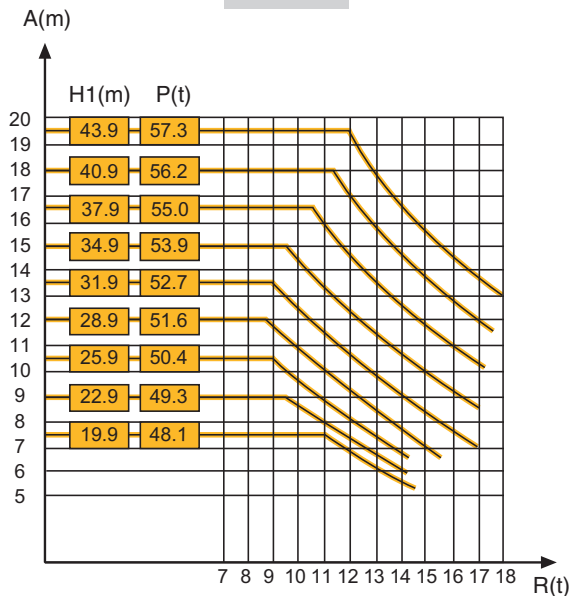
Climbing crane



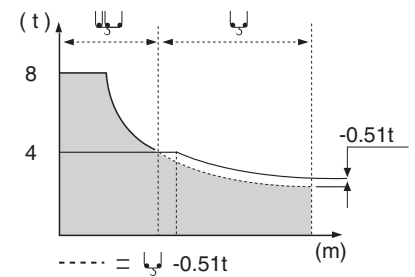
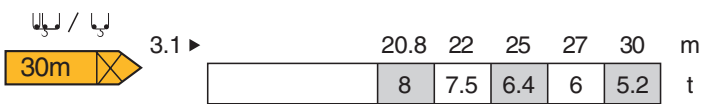
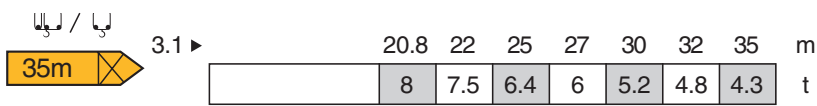
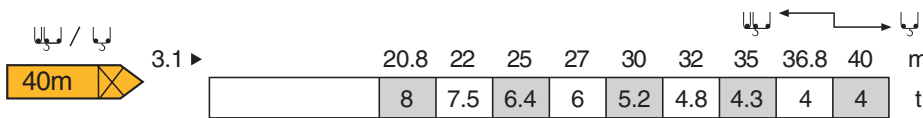
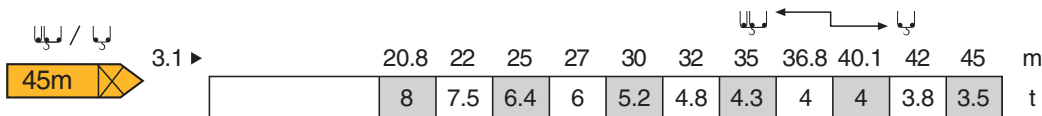
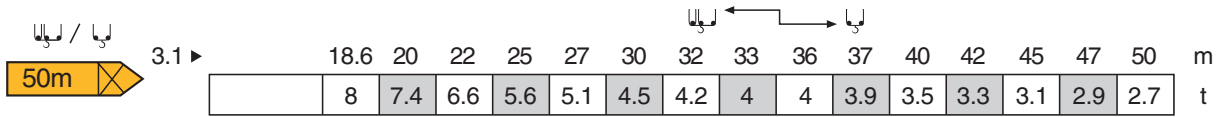
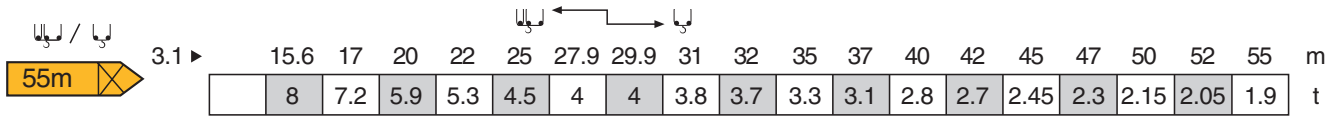
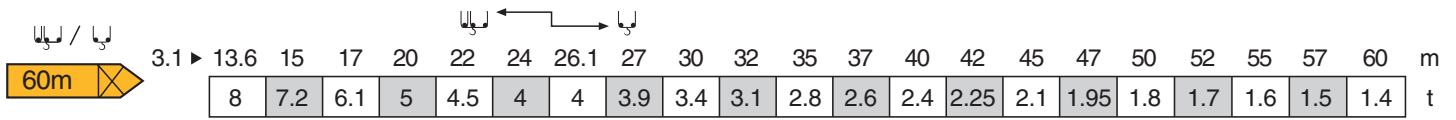
H2	
50 LVF 20	
📦	📦
90M	181M

A Distance between collars
P Crane weight (in service)
H1 Crane height
R Horizontal reaction

BA 45 A

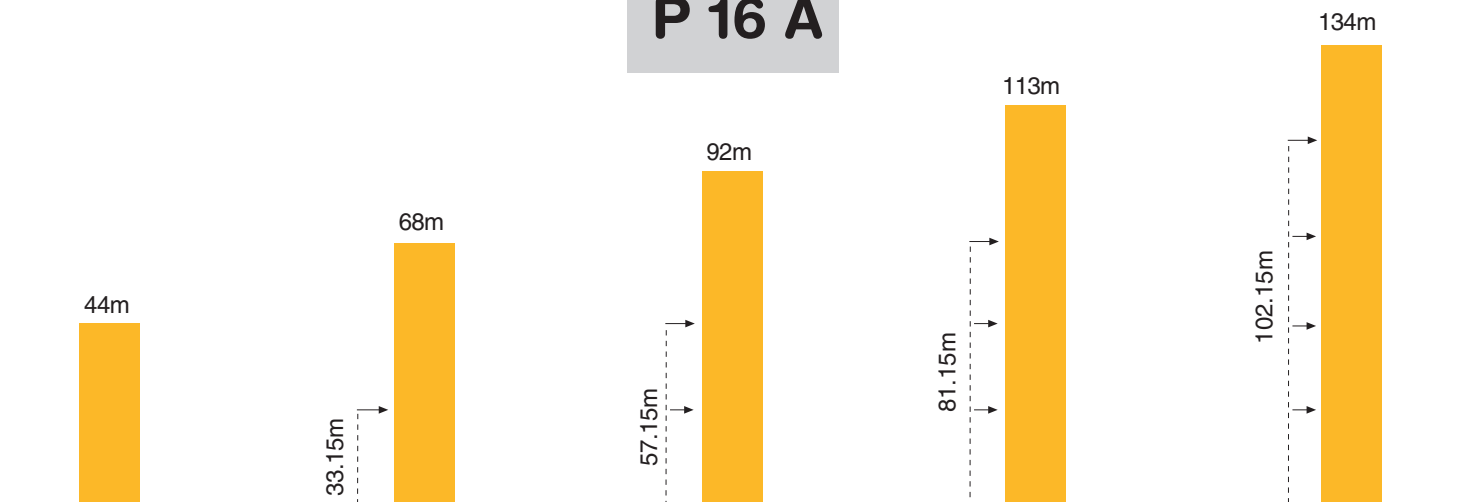


Load diagrams










Anchorage

P 16 A

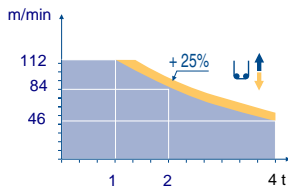







Mechanisms


MCB 2

		↑						↑						hp	kW		
	50LVF20	m/min	3,8 ▶ 14,8 ▶ 46 ▶ 58 ▶ 84 ▶ 112						1,9 ▶ 7,4 ▶ 23 ▶ 29 ▶ 42 ▶ 56						50	37	363 m
		t	4 4 4 3 2 1						8 8 8 6 4 2								
	6 DVF 4	m/min	0,6 ⇒ 76									5,5	4				
	RCV 145	tr/min U/min rpm	0 ⇒ 0,8									2 X 6	2 X 4,4				
	SB 16 A R ≥ 10M	m/min	12,5 - 25									2 X 7	2 X 5,2				
CEI 38  IEC 38		kVA															
400 V (+6% -10%) 50 Hz		50 LVF : 70 kVA						2000/14									

50 LVF 20 Optima



-  **GB** Hoisting
-  Trolleying
-  Slewing
-  Travelling
-  In compliance with the EEC Instructions on noise level

 This commercial document is not legally binding.
For any technical information, please refer to the corresponding instructions.



Manitowoc Crane Group Asia Pte Ltd
 Maniowoc Crane Group
 26 Benoi Road
 Singapore 629898
 Tel: 65-6861 7133
 Fax: (Admin/ Sales) : 65-6862 4040
 Fax: (Service/ Parts) : 65-6862 4142
 www.manitowoccrane.com

Americas
 Tel: +1 920 683 6322
 Tel: +1 717 597 8121

Europe - Middle East - Africa
 Tel : +(33) 4 72 81 50 00
 Tel : +(44) 191 565 6281

Asia - Pacific
 Tel: +(65) 6861 7133
 Fax: +(65) 6862 4142

www.manitowoccrane.com

MC 175B
 Ref.2005 04

Copyright.Reproduction interdite © POTAIN 2004

Réalisation Sedoc